



Specifications

Media	: PTFE
Support	: Polypropylene
Core, Cage	: Polypropylene
End Parts	: Polypropylene
Sealing	: NBR, EPDM, Silicone, PTFE FKM (Fluorine Rubber) E-FKM (Encapsulated Fluorine Rubber)

Filtration rate

Pore Size : 0.1, 0.2, 0.45, 1.0 micron

Dimension

Double open ended:

ID x OD x Length
1.10" x 2.76" x 10", 20", 30", 40"

Single open ended:

ID x OD x Length
0.98" x 2.76" x 10", 20", 30", 40"

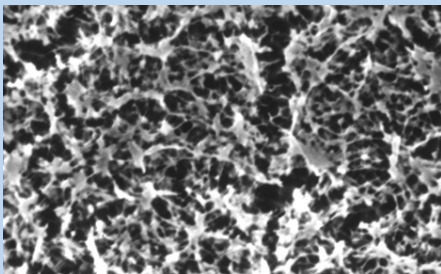
Operating Conditions

Maximum Operating Temperature:
80°C (175°F)

Replacement Differential Pressure:
0.15MPa (22psi)

Maximum Differential Pressure:
0.35MPa (51psi) @ 20°C (68°F)

* depending on operating parameters



CLEAL[®]

POROUSFINE F-Series

Hi Performance PTFE Membrane Type Pleated Cartridge Filter

Features

Structure

CLEAL[®] POROUSFINE F-Series is a pleated cartridge composed of a membrane filter made of PTFE and polypropylene with broad chemical compatibility, and is a clean filter which does not contain any adhesives.

CLEAL[®] POROUSFINE F-Series is a high flow rate and long life pleated cartridge filter that was secured a wide filtration area by sophisticated filter assemble technology.

Advantages

- Uniform pore size structure provides consistent filter ratings.
- There are no pore size changes and media migration.
- Lower pressure drop elongates filter service life is extended.
- Excellent chemical resistance.

Quality

- Production at ISO 9001 certified factory
- Production at ISO 14001 certified factory

Application

Chemicals :

Various chemicals, Solvents

General Industry :

Pure water, Washing Water

Food & Beverages :

Various airs.

Electronics :

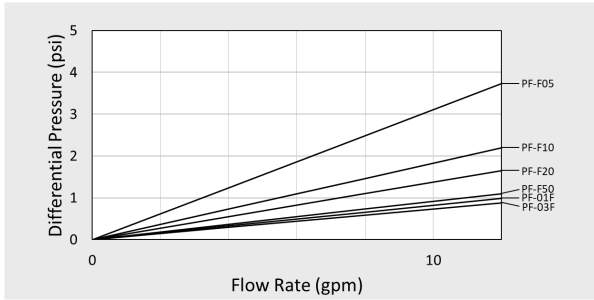
Photoresist developer

Filter Rating

Grade	Pore Size	Media Area
PF-F05	0.05 μm	1,250 in ² /10"
PF-F10	0.1 μm	
PF-F20	0.2 μm	
PF-F50	0.5 μm	
PF-01F	1.0 μm	
PF-03F	3.0 μm	

Water Permeability

Flow Rate - Differential Pressure



※ per 10 inch, in water

Filter End Configuration

G0	Flat Gasket End	
	226 O-ring with Spear closed End	
E7	222 O-ring with Flat closed End	
	222 O-ring with Spear closed End	
M3	222 O-ring with Flat closed End	
	222 O-ring with Spear closed End	
M8	222 O-ring with Flat closed End	
	222 O-ring with Spear closed End	

Ordering Guide

Code information							Sales Unit				
Grade	Filter Rating	End Type & Seal Material		ID & OD (inch)	Length (inch)		SPQ (pcs/ctn)				
PF-	F05 (0.05 μm) F10 (0.1 μm) F20 (0.2 μm) F50 (0.5 μm) 01F (1.0 μm) 03F (3.0 μm)	(DOE)	1 (NBR) 2 (Silicone) 3 (FKM) 4 (Soft PTFE) 5 (EPDM)	28 - 70 - (1.10"x2.76")	(G0)	(10")	250	6			
		G0 (Flat Gasket)				(20")	496	6			
						(30")	742	6			
		(SOE) E7 (226 O-ring with Spear End) M3 (222 O-ring with Flat End) M8 (222 O-ring with Spear End)			E7	1 (NBR) 2 (Silicone) 3 (FKM) 4 (E-FKM) 5 (EPDM)	25 - 70 - (0.98"x2.76")	(E7)	(10")	315	6
									(20")	561	6
	(30")		807	6							
	(M3)		(10")	265	6						
			(20")	511	6						
			(30")	758	6						
			(M8)	(10")	309	6					
	(20")	555		6							
	(30")	801	6								
Example : PF-F10E72 25-70-807 (SPQ 6pcs)											
PF -	F10	E7	2	25-70-	807		6				

* Description of each characteristic data is based on our original test methods. The actual data may differ slightly from the data shown here by use conditions.

* Please be reminded that we may change this content without advance notice.

* Copyright JNC Filter Co., Ltd. All rights reserved. No reproduction or republication without written permission.



JNC Filter Co., Ltd.

Headquarters and Osaka Sales Office
Tokyo Sales Office
Nagoya Sales Office
web : <http://www.jnc-corp.co.jp/filter/>

Tel : +81-6-6441-3257 Fax : +81-6-6441-8836
Tel : +81-3-3243-6222 Fax : +81-3-3243-6223
Tel : +81-52-583-6007
Email : jft.exp@jnc-corp.co.jp

3-3-23, Nakanoshima, Kita-ku, Osaka 530-6108
2-2-1, Otemachi, Chiyoda-ku, Tokyo 100-8105
4-4-10, Meieki, Nakamura-ku, Nagoya 450-8561



J00226_2019.02.0000