



Specifications

Media	: PTFE
Support	: Polypropylene
Core, Cage	: Polypropylene
End Parts	: Polypropylene
Sealing	: NBR, EPDM, Silicone, PTFE FKM (Fluorine Rubber) E-FKM (Encapsulated Fluorine Rubber)

Filtration rate

Pore Size : 0.1, 0.2, 0.45, 1.0 micron

Dimension

Double open ended:

ID x OD x Length

1.10" x 2.76" x 10", 20", 30", 40"

Single open ended:

ID x OD x Length

0.98" x 2.76" x 10", 20", 30", 40"

Operating Conditions

Maximum Operating Temperature:
80°C (175°F)

Replacement Differential Pressure:
0.15MPa (22psi)

Maximum Differential Pressure:
0.35MPa (51psi) @ 20°C (68°F)

* depending on operating parameters

CLEAL[®]

POROUSFINE T-Series

PTFE Membrane Type Pleated Cartridge Filter

Features

Structure

CLEAL[®] POROUSFINE T-Series is a pleated cartridge composed of a membrane filter made of PTFE and polypropylene with broad chemical compatibility, and is a clean filter which does not contain any adhesives.

PTFE : Poly-Tetra-Fluoro-Ethylene (C2F4)_n

Advantages

- Uniform pore size structure provides consistent filter ratings.
- There are no pore size changes and media migration.
- Lower pressure drop elongates filter service life is extended.
- Excellent chemical resistance.

Quality

- Production at ISO 9001 certified factory
- Production at ISO 14001 certified factory

Application

Chemicals :

Various chemicals, Solvents

General Industry :

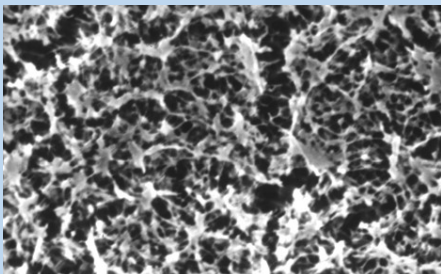
Pure water, Washing Water

Food & Beverages :

Various airs.

Electronics :

Photoresist developer

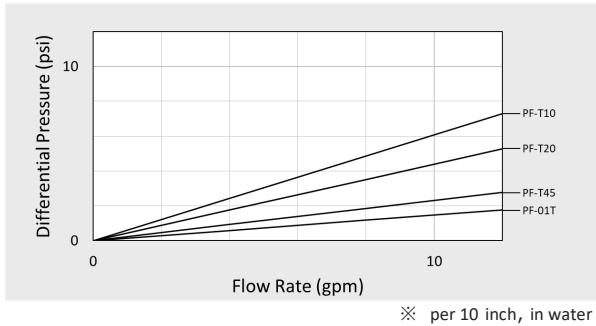


Filter Rating

Grade	Pore Size	Media Area
PF-T10	0.1 μm	930 in ² /10"
PF-T20	0.2 μm	
PF-T45	0.45 μm	
PF-01T	1.0 μm	

Water Permeability

Flow Rate - Differential Pressure



Filter End Configuration

G0	Flat Gasket End	
	226 O-ring with Spear closed End	
E7	222 O-ring with Flat closed End	
	222 O-ring with Spear closed End	
M3	222 O-ring with Flat closed End	
	222 O-ring with Spear closed End	
M8	222 O-ring with Flat closed End	
	222 O-ring with Spear closed End	

Ordering Guide

Code information							Sales Unit						
Grade	Filter Rating	End Type & Seal Material		ID & OD (inch)	Length (inch)		SPQ (pcs/ctn)						
PF-	T10 (0.10 μm) T20 (0.20 μm) T45 (0.45 μm) 01T (1.0 μm)	(DOE)	G0 (Flat Gasket)	1 (NBR) 2 (Silicone) 3 (FKM) 4 (Soft PTFE) 5 (EPDM)	28 - 70 - (1.10"x2.76")	(G0)	(10")	250	6				
							(20")	496	6				
							(30")	742	6				
						(SOE)	E7 (226 O-ring with Spear End) M3 (222 O-ring with Flat End) M8 (222 O-ring with Spear End)	1 (NBR) 2 (Silicone) 3 (FKM) 4 (E-FKM) 5 (EPDM)	25 - 70 - (0.98"x2.76")	(E7)	(10")	315	6
											(20")	561	6
											(30")	807	6
		(M3)	(10")	265	6								
			(20")	511	6								
			(30")	758	6								
		(M8)	(10")	309	6								
			(20")	555	6								
			(30")	801	6								
Example : PF-T10E72 25-70-807 (SPQ 6pcs)													
PF -	T10	E7	2	25-70-	807		6						

* Description of each characteristic data is based on our original test methods. The actual data may differ slightly from the data shown here by use conditions.

* Please be reminded that we may change this content without advance notice.

* Copyright JNC Filter Co., Ltd. All rights reserved. No reproduction or republication without written permission.



JNC Filter Co., Ltd.

Headquarters and Osaka Sales Office
 Tokyo Sales Office
 Nagoya Sales Office
 web : <http://www.jnc-corp.co.jp/filter/>

Tel : +81-6-6441-3257 Fax : +81-6-6441-8836
 Tel : +81-3-3243-6222 Fax : +81-3-3243-6223
 Tel : +81-52-583-6007
 Email : jft.exp@jnc-corp.co.jp

3-3-23, Nakanoshima, Kita-ku, Osaka 530-6108
 2-2-1, Otemachi, Chiyoda-ku, Tokyo 100-8105
 4-4-10, Meieki, Nakamura-ku, Nagoya 450-8561



J00222_2019.02.0000