



Specifications

| | |
|------------|--|
| Media | : Polypropylene |
| Support | : Polypropylene |
| Core, Cage | : Polypropylene |
| End Parts | : Polypropylene |
| Sealing | : NBR, EPDM, Silicone, PTFE FKM (Fluorine Rubber) E-FKM (Encapsulated Fluorine Rubber) |

Filtration rate

Micron rate : 0.2, 0.4, 0.6,
1, 3, 5, 7, 10, 15 micron

Dimension

Double open ended:

ID x OD x Length
1.10" x 2.76" x 10", 20", 30", 40"

Single open ended:

ID x OD x Length
0.98" x 2.76" x 10", 20", 30", 40"

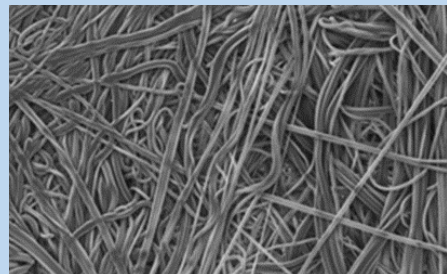
Operating Conditions

Maximum Operating Temperature:
80°C (175°F)

Replacement Differential Pressure:
0.15MPa (22psi)

Maximum Differential Pressure:
0.35MPa (51psi) @ 20°C (68°F)

* depending on operating parameters



CLEAL[®] POROUSFINE

PP Fiber Type Pleated Cartridge Filter

Features

Structure

CLEAL[®] POROUSFINE PP fiber type is a pleated cartridge filter made by processing JNC's original polypropylene fibers in the form of a membrane. Raw materials to assembly processing it is a superior filter that achieves long filter life and low pressure drops. Moreover, CLEAL[®] POROUSFINE does not contain adhesives and may also be used safely for food and beverages.

Advantages

- Uniform pore size structure provides consistent filter ratings.
- There are no pore size changes and media migration.
- Lower pressure drop elongates filter service life is extended.
- Excellent chemical resistance.

Quality

- Production at ISO 9001 certified factory
- Production at ISO 14001 certified factory

Application

Chemicals :

Various chemicals, Solvents

General Industry :

Pure water, Washing liquid (acid, Alkaline, IPA)

Food & Beverages :

Drinking water, Liquor (beer, sake, and wine)

Electronics :

Washing liquid (acid, Alkaline, IPA)

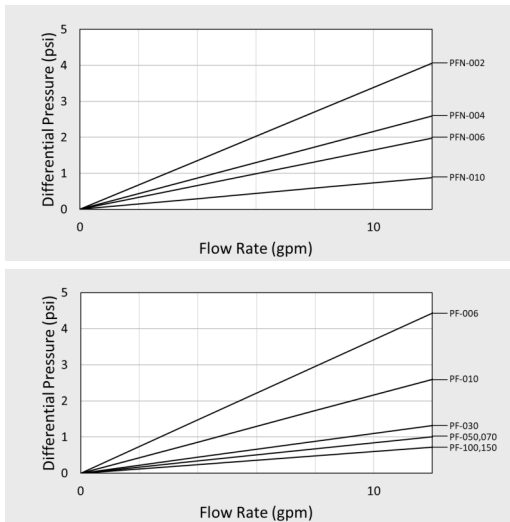
Filter Rating

| Grade | Nominal rating | Absolute rating | Media area | Grade | Absolute rating | Media area | Grade | Absolute rating | Media area |
|---------|----------------|-----------------|--------------------------|--------|-----------------|--------------------------|--------|-----------------|--------------------------|
| PFN-002 | 0.2 μm | 0.3 μm | 740 in ² /10" | PF-006 | 0.6 μm | 930 in ² /10" | PF-050 | 5 μm | 800 in ² /10" |
| PFN-004 | 0.4 μm | 0.5 μm | | PF-010 | 1 μm | | PF-070 | 7 μm | |
| PFN-006 | - | 0.6 μm | | PF-030 | 3 μm | | PF-100 | 10 μm | |
| PFN-010 | - | 1 μm | | | | | PF-150 | 15 μm | |

※ Absolute rating values are only for the reference

Water Permeability

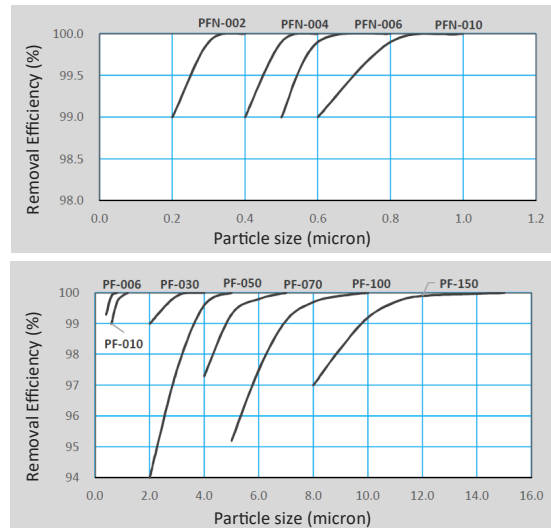
Flow Rate - Differential Pressure



※ per 10 inch, in water





Removal Efficiency

Initial Particle Removal Efficiency



※ tested by JNC method

Ordering Guide

| Code information | | | | | | | | Sales Unit | | | | | | |
|------------------|---------------|---------------------------------------|---|--|-----------------------------------|---------------|---|---------------|---|--|-------|------------|------------|---|
| Grade | Filter Rating | End Type & Seal Material | | | ID & OD (inch) | Length (inch) | | SPQ (pcs/ctn) | | | | | | |
| PFN- | 002 (0.2 μm) | (DOE) |  | 1 (NBR) 2 (Silicone) 3 (FKM) 4 (Soft PTFE) 5 (EPDM) | 28 - 70 - (1.10"x2.76") | (G0) | (10") | 250 | 6 | | | | | |
| | 004 (0.4 μm) | G0 (Flat Gasket End) | | | | | (20") | 496 | 6 | | | | | |
| | 006 (0.6 μm) | | | | | | (30") | 742 | 6 | | | | | |
| | 010 (1.0 μm) | | | | | | | | | | | | | |
| PF- | 006 (0.6 μm) | (SOE) |  | 1 (NBR) 2 (Silicone) 3 (FKM) 4 (E-FKM) 5 (EPDM) | 25 - 70 - (0.98"x2.76") | (E7) | (10") | 315 | 6 | | | | | |
| | 010 (1 μm) | E7 (226 O-ring with Spear End) | | | | | (20") | 561 | 6 | | | | | |
| | 030 (3 μm) | | | | | | (30") | 807 | 6 | | | | | |
| | 050 (5 μm) | | | | | | | | | | | | | |
| | 070 (7 μm) | M3 (222 O-ring with Flat End) | | | | |  | | | | (10") | 265 | 6 | |
| | 100 (10 μm) | | | | | | | | | | (20") | 511 | 6 | |
| | 150 (15 μm) | | | | | | | | | | (30") | 758 | 6 | |
| | | M8 (222 O-ring with Spear End) | | | | |  | | | | | (10") | 309 | 6 |
| | | | | | | | | | | | | (20") | 555 | 6 |
| | | | | | | | | | | | | (30") | 801 | 6 |

Example : PF-010E72 25-70-807 (SPQ 6pcs)

| | | | | | | |
|------|-----|----|---|--------|-----|---|
| PF - | 010 | E7 | 2 | 25-70- | 807 | 6 |
|------|-----|----|---|--------|-----|---|

- * Description of each characteristic data is based on our original test methods. The actual data may differ slightly from the data shown here by use conditions.
- * Please be reminded that we may change this content without advance notice.
- * Copyright JNC Filter Co., Ltd. All rights reserved. No reproduction or republication without written permission.



JNC Filter Co., Ltd.

Headquarters and Osaka Sales Office
 Tokyo Sales Office
 Nagoya Sales Office
 web : <http://www.jnc-corp.co.jp/filter/>

Tel : +81-6-6441-3257
 Tel : +81-3-3243-6222
 Tel : +81-52-583-6007

Fax : +81-6-6441-8836
 Fax : +81-3-3243-6223

3-3-23, Nakanoshima, Kita-ku, Osaka 530-6108
 2-2-1, Otemachi, Chiyoda-ku, Tokyo 100-8105
 4-4-10, Meieki, Nakamura-ku, Nagoya 450-8561



J00221_2019.02.0000